

BUCKNER PLACE
VOL. 84115, PG. 3440 D.R.D.C.T.
LOT 2
BLOCK 10/6172
131,248.76 SQ.FT.
3.0131 ACRES

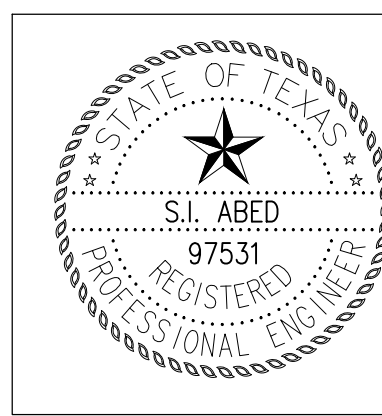
BUCKNER PLACE
VOL. 84115, PG. 3440
D.R.D.C.T.
LOT 3
BLOCK 10/6172

M & A ENTERPRISES, LLC
DOC. # 201500102118
D.R.D.C.T.
LOT 1, BLOCK 10/6172
130,575 SQ. FT.
3.00 ACRES

2.4642 ACRES
LOT-3

PLANT LIST

| Quantity | Symbol | Scientific Name | Common Name | Planting Size | Tree Size |
|----------|--------|------------------------------|---------------------|-------------------|-------------|
| 16 | ☉ | Taxodium distichum | Blad Cypress | 3"-Cal/6' Ht | Large Tree |
| 160 | ⊙ | Ilex cornuta 'Dwarf Burford' | Dwarf Burford holly | 5-Gal/3' Ht/3' OC | Small Tree |
| 10 | ⊙ | Quercus virginiana | Southern Live Oak | 3"-Cal/6' Ht | Large Tree |
| 23 | ⊙ | Prunus Mexicana | Mexican Plum | 2"-Cal/6' Ht | Medium Tree |



Shahiq 6/17/16
S.I. ABED
THESE CONSTRUCTION PLANS WERE PREPARED UNDER THE RESPONSIBLE SUPERVISION OF S.I. ABED, REGISTERED PROFESSIONAL ENGINEER NO. 97531
THE SEAL APPEARING ON THIS DOCUMENT WAS AUTHORIZED BY S.I. ABED, P.E. #97531

ddc DESIGN DEVELOPMENT CONSULTANTS, INC.
CIVIL, MUNICIPAL & LAND DEVELOPMENT CONSULTANT
REGISTRATION # 10970
221 BEDFORD ROAD, SUITE # 315, BEDFORD, TX, 76022
SITE OFFICE: 503 WADE COURT, EULESS, TX, 76039.
Tel: 214-868-9320 Fax: 1-866-531-8263

C-11

LANDSCAPE REQUIREMENT FOR SITE

SITE TREES :
SITE AREA = 130575 SQ. FT.(APPROXIMATELY)
(1, 2" CALIPAR TREE REQUIRED PER 4,000 SQ. FT OF LOT AREA.)

NO. OF TREE REQUIRED 130575/4000 = 33
NO. OF TREE PROVIDED = 33

PERIMETER LANDSCAPE BUFFER STRIP:
10' WIDE BUFFER STRIP PROVIDED.

SCREENING OF OFF-STREET LOADING SPACE
6' SOLID FENCE PROVIDED ALONG MULTIFAMILY RESIDENTIAL ADJACENCY.

STREET TREES :
ST. FRANCIS RD. ACCESS FRONTAGE LENGTH = 511 FT (APPROXIMATELY)
(TREE REQUIREMENT 1 (3") CALIPER 6' HIGH LARGE TREES IN EVERY 50'/WITHIN 30' FROM STREET CURB)

NO. OF TREE REQUIRED 511/50 = 10.22 OR 11
NO. OF TREE PROVIDED = 11 (BLAD CYPRESS)

BUCKNER BLVD. FRONTAGE LENGTH = 234 FT (APPROXIMATELY)
(TREE REQUIREMENT 1 (3") CALIPER 6' HIGH LARGE TREES IN EVERY 50')

NO. OF TREE REQUIRED 234/50 = 4.68
NO. OF TREE PROVIDED = 5 (BLAD CYPRESS)

PARKING LOT TREES :
ALL PARKING SPACES WITHIN 120 FT OF 2" CALIPER LARGE CANOPY TREE- (PROVIDED/ SOUTHERN LIVE OAK)

SCREENING OFF STREET PARKING:
3' DWARF BURFORD HOLLY PROVIDED ALONG THE ENTIRE ADJACENT PUBLIC STREET.

BENCHMARK:

A City of Dallas Benchmark set on top of a concrete curb at the Northwest corner of a storm sewer drop inlet at the Southeast corner of a "T" intersection at St. Francis Avenue and Senate Street. Elevation=534.36'

A City of Dallas Benchmark set on top of a concrete curb at the Northeast corner of a storm sewer drop inlet at the Southwest corner of the intersection of Highland Road and Jim Miller Road. Elevation=524.89'

LEGEND

| | | | |
|-----|--------------------|-----------|----------------------------|
| ⊙ | BOLLARD | STM | STORM SEWER MANHOLE |
| ⊙ | CLEANOUT | WM | WATER METER |
| ⊙ | FIRE HYDRANT | WV | WATER VALVE |
| ⊙ | GAS MANHOLE | --- | PROPERTY LINE |
| ⊙ | GAS METER | --- | EASEMENT LINE |
| --- | GUY ANCHOR | -X- | FENCE |
| --- | LIGHT STANDARD | ---OHL--- | OVERHEAD UTILITY LINE |
| ⊙ | POWER POLE | --- | STORM DRAIN LINE |
| ⊙ | METAL UTILITY POLE | --- | WATER LINE |
| --- | PP W/ GUY ANCHOR | --- | SANITARY SEWER LINE |
| --- | TRAFFIC SIGN | --- | EXIST CONTOUR |
| --- | SAN. SEWER MANHOLE | --- | EXIST SPOT ELEV. |
| --- | WOODEN POST | --- | EXIST TOP OF CURB ELEV. |
| | | --- | EXIST GUTTER ELEV. |
| | | --- | EXIST TOP OF WALL ELEV. |
| | | --- | EXIST BOTTOM OF WALL ELEV. |
| | | --- | UNDERGROUND GAS LINE |

| 3. | | | | |
|-------|--------------|------|----------------|------|
| 2. | | | | |
| 1. | | | | |
| Rev # | TYPE OF WORK | DATE | CITY OF DALLAS | DATE |

LANDSCAPE PLAN
LUCKY TEXAN-8
CITY PLAN FILE No. S_____
DEPARTMENT OF PUBLIC WORKS
CITY OF DALLAS, TEXAS

| | | | | | | |
|---------|---------|----------|----------|--------|--------|------|
| DESIGN: | DRAWN : | CHECKED: | DATE : | SCALE: | FILE : | NO : |
| S.I.A. | AI | S.I.A. | 06/17/16 | 1"=30' | 311T | 9022 |